

# WALL CONTROL INSTALLATION INSTRUCTION

## WALL CONTROL COMPATIBILITY

THIS WALL CONTROL MAY BE USED WITH THE FOLLOWING VENTILATION UNITS:

### VENMAR UNITS

- AVS SOLO
- AVS DUO
- HE
- COMPACT
- HRV AND ERV EKO 1.5
- AVS KUBIX ERV
- AVS KUBIX HRV PLUS
- HRV NOVOFIT 1.0
- HRV NOVOFIT 1.5ES & 2.0ES
- HRV AND ERV CONSTRUCTO 1.0\*

\*CONSTRUCTO 1.0 UNITS BUILT IN AUGUST 2008 AND LATER. THE DATE CODE ON THE UNIT IS PART OF ITS 13-DIGIT SERIAL NUMBER. FOR EXAMPLE, THE SERIAL NUMBER XXXX0708XXXXX, WHERE 07 IS THE YEAR AND 08 THE MONTH (AUGUST); THE DATE CODE IS ALWAYS THE FIFTH, SIXTH, SEVENTH AND EIGHTH DIGITS.

### VÄNÉE UNITS

- GOLD SERIES
- HE\*
- HRV AND ERV 60H\*
- HRV AND ERV 90H-V ECM
- VIGÖR HRV PLUS
- VIGÖR ERV
- 60H Novo+
- 100H Novo+
- 200H Novo+

\*VÄNÉE 60H UNITS BUILT IN AUGUST 2008 AND LATER, AND VÄNÉE HE UNITS BUILT IN JULY 2006 AND LATER. THE DATE CODE ON THE UNIT IS PART OF ITS 13-DIGIT SERIAL NUMBER. FOR EXAMPLE, THE SERIAL NUMBER XXXX0708XXXXX, WHERE 07 IS THE YEAR AND 08 THE MONTH (AUGUST); THE DATE CODE IS ALWAYS THE FIFTH, SIXTH, SEVENTH AND EIGHTH DIGITS.

## WALL CONTROL INSTALLATION

### ⚠ WARNING

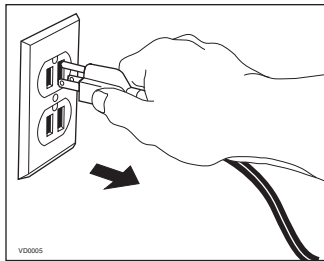
**ALWAYS DISCONNECT THE UNIT BEFORE MAKING ANY CONNECTIONS. FAILURE TO DISCONNECT POWER COULD RESULT IN ELECTRIC SHOCK OR DAMAGE TO THE WALL CONTROL OR ELECTRONIC MODULE INSIDE THE UNIT.**

### CAUTION

**FAILURE TO COMPLY WITH THE FOLLOWING CAN CAUSE ERRATIC OPERATION OF THE UNIT:**

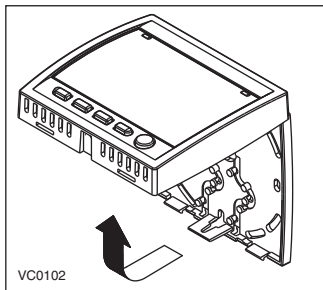
- NEVER INSTALL MORE THAN ONE MAIN WALL CONTROL PER VENTILATION UNIT.
- KEEP CONTROL LOW VOLTAGE WIRING AT LEAST 1 FOOT (305 MM) AWAY FROM MOTORS, LIGHTING BALAST, LIGHT DIMMING CIRCUIT AND POWER DISTRIBUTION PANEL. DO NOT ROUTE CONTROL WIRING ALONGSIDE HOUSE POWER WIRING.
- ENSURE THE WIRES ARE SECURELY CONNECTED.

- ① UNPLUG THE VENTILATION UNIT FROM POWER SOURCE.

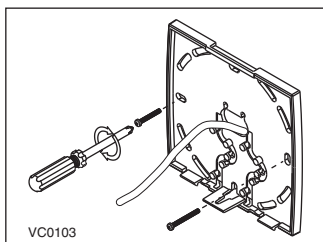


- ② ROUTE THE CABLE FROM THE UNIT TO A CONVENIENT LOCATION FOR THE WALL CONTROL.

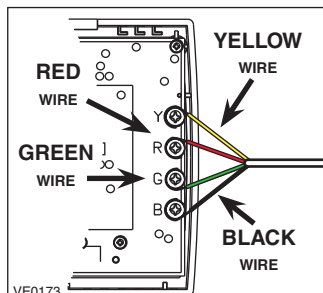
- ③ DETACH THE FRONT MODULE FROM THE MOUNTING PLATE BY LIFTING ITS BOTTOM PART.



- ④ RUN THE CABLE (4 WIRES) THROUGH THE CENTRAL OPENING OF THE MOUNTING PLATE AND MOUNT THIS PLATE TO THE WALL USING SCREWS (NOT INCLUDED). IF NEEDED, USE WALL ANCHORS (NOT INCLUDED).



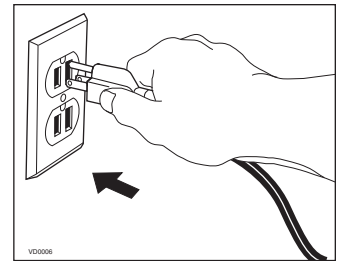
- ⑤ SPLICE BACK THE END OF THE CABLE TO ACCESS THE 4 WIRES. STRIP THE END OF EACH WIRE. CONNECT EACH WIRE TO ITS CORRESPONDING TERMINAL ON THE BACK OF THE FRONT MODULE: YELLOW WIRE TO "Y", RED WIRE TO "R", GREEN WIRE TO "G" AND BLACK WIRE TO "B".



### CAUTION

**BE CAREFUL NOT TO PINCH WIRES WHEN REINSTALLING THE FRONT MODULE ON ITS BACK PLATE.**

- ⑥ REINSTALL THE FRONT MODULE OVER THE BACK PLATE.

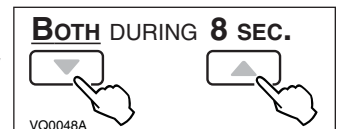


- ⑦ PLUG THE VENTILATION UNIT IN POWER SOURCE.

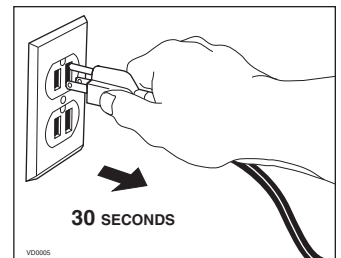
## WALL CONTROL RESET PROCEDURE

THE WALL CONTROL MUST BE RESET IF IT WAS PREVIOUSLY CONNECTED TO ANOTHER VENTILATION UNIT. TO PERFORM THE RESET:

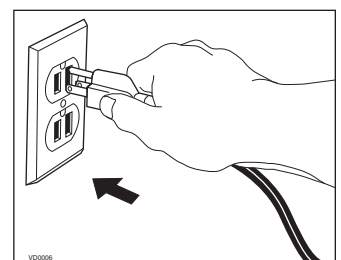
- ① PRESS SIMULTANEOUSLY ON BOTH ARROW KEYS FOR 8 SECONDS.



- ② UNPLUG THE VENTILATION UNIT FOR 30 SECONDS.



- ③ PLUG BACK THE VENTILATION UNIT IN POWER SOURCE.



## BOOTING SEQUENCE

AT ITS VERY START-UP, THE WALL CONTROL WILL PERFORM A BOOTING SEQUENCE BEFORE BEING READY TO OPERATE. THE BOOTING SEQUENCE IS DONE WHEN THE HOUR DISPLAY IS FLASHING.

## POWER FAILURE

AFTER A POWER FAILURE, THERE IS ALSO A BOOTING SEQUENCE; ONCE DONE, THE WALL CONTROL RETURNS TO ITS ORIGINAL SETTINGS. HOWEVER, IF THE POWER FAILURE DURATION IS MORE THAN 4 HOURS, THE WALL CONTROL LOOSES ONLY ITS DAY AND TIME SETTINGS MEMORY (THESE MUST BE REPROGRAMMED). THE REST OF THE PREFERENCES AND SETTINGS IS KEPT IN PERMANENT MEMORY.

## OUTSIDE TEMPERATURE READING

AT ITS VERY START-UP OR AFTER A POWER FAILURE, IT TAKES SOME MINUTES BEFORE THE OUTSIDE TEMPERATURE APPEARS ON SCREEN. THE DELAY DURATION DEPENDS ON WHICH OPERATION MODE THE WALL CONTROL IS SET. THE SHORTEST DELAY IS OBTAINED WHEN THE WALL CONTROL IS SET ON MIN OR MAX IN VENT MODE.

## ERROR CODES

IF A PROBLEM OCCURS WITH THE WALL CONTROL, ERROR CODE WILL APPEAR ON SCREEN.

CODES	CAUSES	SOLUTION
E1	<ul style="list-style-type: none"> <li>• THE WIRES MAY BE IN REVERSE POSITION.</li> <li>• THE WIRES MAY BE BROKEN.</li> <li>• THE WIRES MAY HAVE A BAD CONNECTION.</li> </ul>	<ul style="list-style-type: none"> <li>• ENSURE THAT THE COLOR CODED WIRES HAVE BEEN CONNECTED TO THEIR APPROPRIATE PLACE.</li> <li>• INSPECT EVERY WIRE AND REPLACE ANY THAT ARE DAMAGED.</li> <li>• ENSURE THE WIRES ARE CORRECTLY CONNECTED.</li> </ul>
E3	<ul style="list-style-type: none"> <li>• DEFECTIVE INDOOR TEMPERATURE SENSOR.</li> </ul>	<ul style="list-style-type: none"> <li>• RESET THE WALL CONTROL (SEE WALL CONTROL RESET PROCEDURE).</li> </ul>
E4	<ul style="list-style-type: none"> <li>• DEFECTIVE INDOOR HUMIDITY SENSOR.</li> </ul>	<ul style="list-style-type: none"> <li>• RESET THE WALL CONTROL (SEE WALL CONTROL RESET PROCEDURE).</li> </ul>